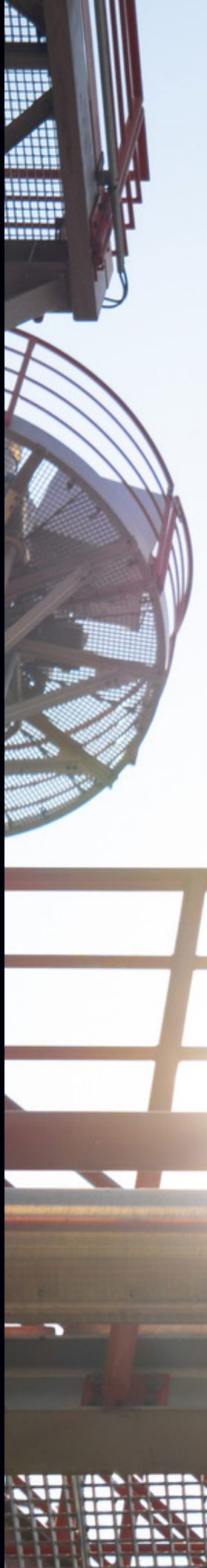




blacklinesafety

Oil and Gas



No matter what challenges the Oil and Gas Industry face, **Blackline gets workers home safe and sound.**

Making sure every worker goes home safe after every shift is important to you – and it's what drives us. That means protecting your team from dangers like atmospheric hazards, explosions and fires, falls, confined spaces, and more. Blackline Safety protects workers in refineries, oil fields, petrochemical facilities, processing plants and other locations across the industry where safety is a priority.

Whether it's personal or area gas monitoring, confined space entry, protecting lone workers or the need to improve your safety overall, no one has you covered better than Blackline. With a suite of the most advanced and capable products on the market including software for data analytics and reporting, you now have access to a connected safety ecosystem that gives you visibility into your worksites like never before.

blacklinesafety

TABLE OF CONTENTS

01 Benefits	4
02 Connectivity	7
03 Visibility	8
04 Reliability and Durability	11
05 Compliance	12
06 Application	14
07 Turnarounds and Shutdowns	17
08 Evacuation and Incident Management	18
09 Product	20





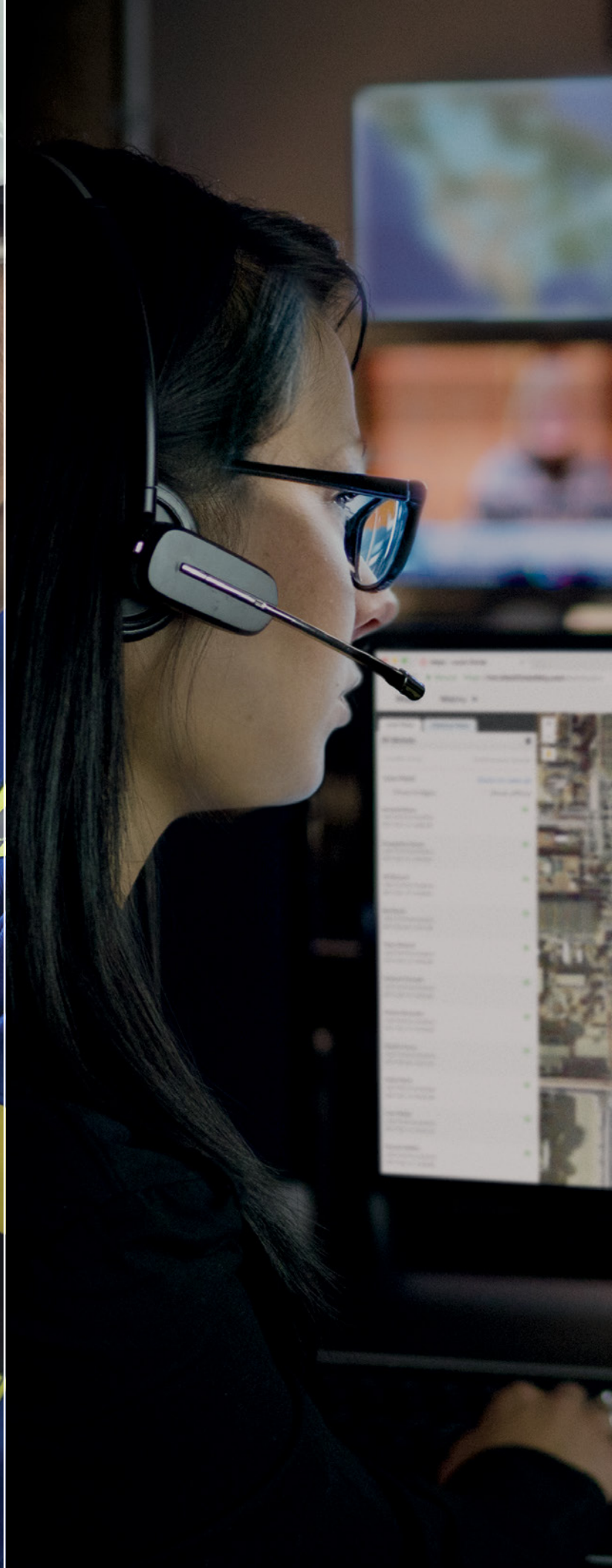
01

Benefits

How we do it, and more importantly **why we do it.**

At Blackline Safety, our constant drive is to develop innovative solutions to protect workers, because when lives are on the line, there simply is no room for second best.





02
Connectivity

Protected Because They're Connected.

Whether it's a worker entering a confined space, an entire facility needing to be monitored for potential gas hazards, or initiating an emergency response or evacuation – reliable, connected safety devices are a critical link between workers and the help they need. No matter the situation, Blackline Safety has your connectivity covered.

G7 wearables instant connectivity allows you to locate any team member – anywhere, any time – as soon as it's turned on. With GPS, cellular or satellite connectivity and two-way communications, G7 is a true lifeline for workers. It automatically connects to the cloud, without the need for WiFi or network set up. And the **G7 EXO area monitor** delivers the same unmatched connectivity and visibility into your entire facility.

When real-time data isn't a priority, but connected safety is, **G6 wearables** provide a cost-effective, single-gas option that sends data to the cloud every 24 hours and automatically updates firmware, so it always has latest enhancements. If an alarm is triggered, G6 instantly connects, notifies monitoring personnel, and sends alarm data, so a fast and informed response can be initiated. Those archaic “beep and flash” detectors simply no longer cut it.

For businesses without a control room or always-available supervisors, Blackline's in-house Safety Operations Center (SOC) is staffed 24/7 with professionally trained monitoring agents focused exclusively on the wellbeing of your employees. Connect your team to the SOC to ensure industry-leading live monitoring is with them wherever they operate.

03

Visibility

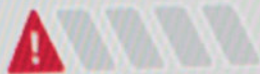
Visualize the Data to Keep Your Team Safe.

Blackline Live, our safety and productivity software platform, helps protect your workforce by giving you in-depth visibility into their wellbeing and surroundings.

An important part of dealing with incidents is preventing them from happening in the first place. Having full awareness of every situation, from normal routines to when an incident occurs, lets you make informed decisions. With Blackline Live, vital device data is easily visualized, allowing you to gain insights into your operation and initiate preventative safety protocols.

With advanced data analytic capabilities, Blackline Live ensures you're constantly in the know with real-time compliance status of your entire fleet, comprehensive safety monitoring and unquestionable control of evacuation management. Through standard reports such as gas readings, alerts, usage, and bump tests and calibrations, you'll be able to quickly identify any potential safety concerns. The data recorded today helps provide measurable performance for tomorrow.

2 Alerts ▾



gement



fety

DT

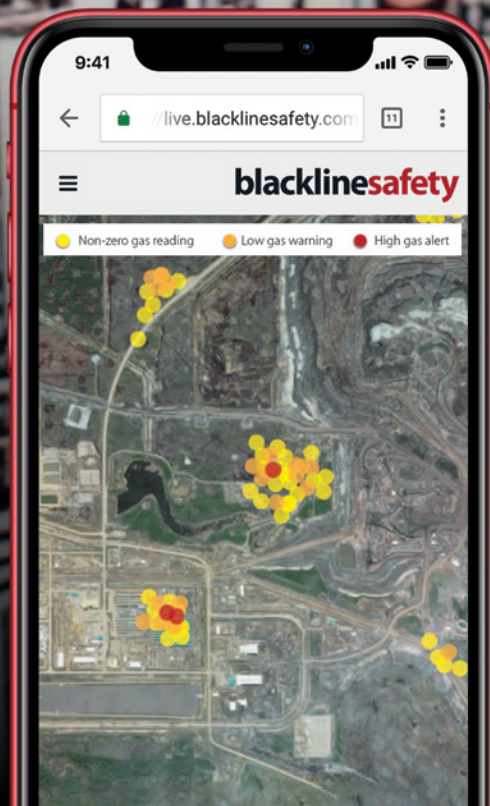
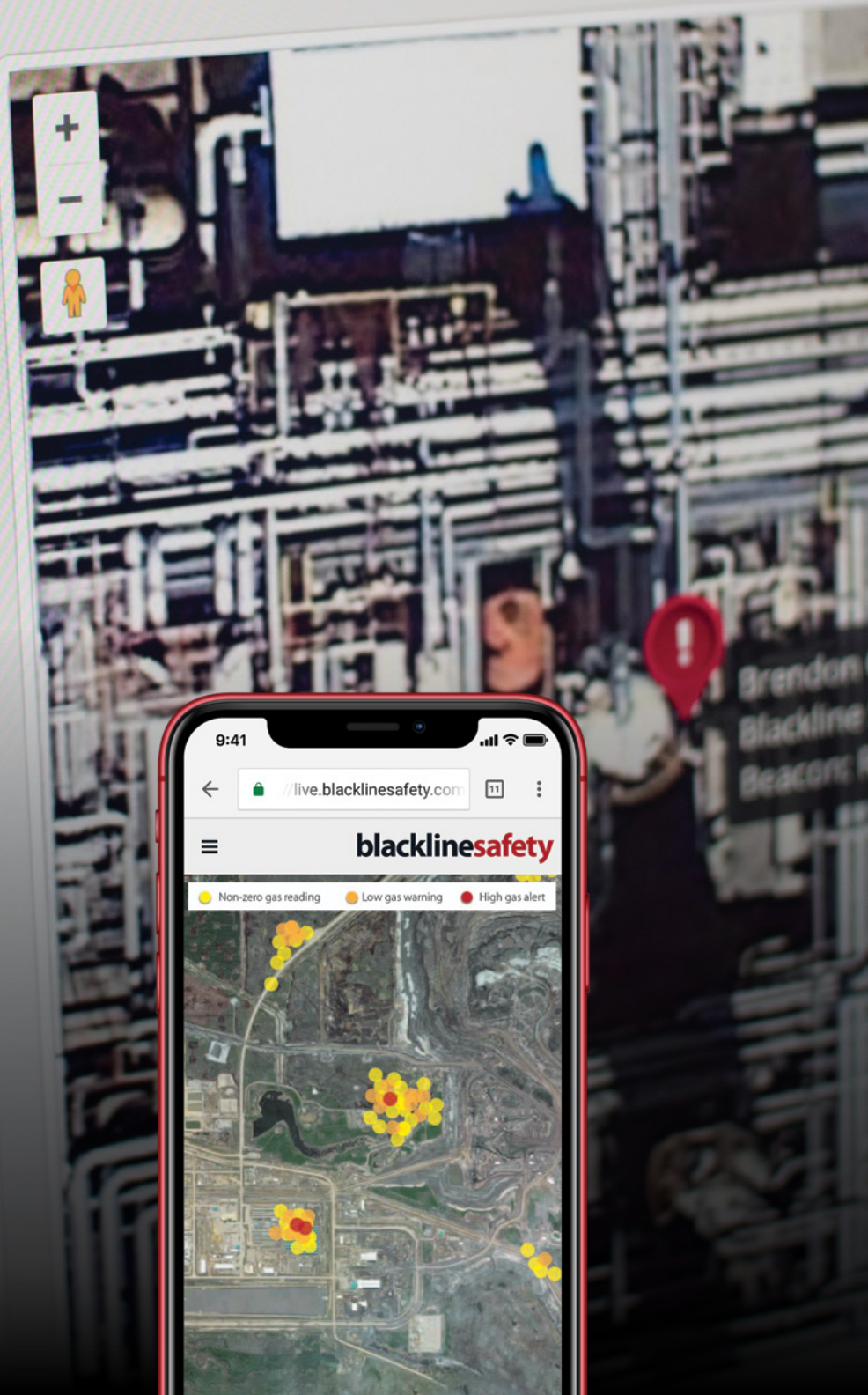
for resolving --



st 24 hours

elow to view its history

2017-07-17 11:08:55 MDT | Fall





Reliability and Durability

Devices as **Tried and True** as Your Workers

Whether it's the harsh environment of a refinery, a confined space entry or an extended job in harsh weather, the last thing you need to worry about is your equipment. With Blackline, you get the most rugged, reliable, and durable safety products on the market that provide exceptional performance in extreme conditions. It's about saving money, time, and headaches you don't need. Most importantly, it's about saving your team from having to worry about their safety rather than the task at hand.

With 100-day battery life and rugged design, the G7 EXO area monitor can outlast any project and stand up to any environment. Going to be on a drill site for three weeks or longer? Need to have extended access to a confined space and don't want to re-permit? G7 EXO won't need a battery replacement – it's an area monitor with built-in cost and time savings. If the situation calls for extra power, add it via the intrinsically safe charging port or optional solar panel to continuously monitor the safety of your worksite indefinitely.

While G7 wearables lead the way for connected single-gas to five-gas detectors with or without pump, they are so much more than that – taking worker safety to the next level. With extensive man-down safety features including fall detection, missed check-in alarms, no motion detection and an S.O.S. latch to call for immediate assistance, G7 has your workers' back in potentially risky situations beyond gas detection. With two-way communications and push-to-talk functionality (similar to a walkie talkie but with unlimited range), your team's safety are always taken care of.

Add in pre-calibrated sensor cartridges and other options, and you've got a versatile, customizable solution that enhances safety and productivity.

With a four-year warranty and rechargeable battery that lasts for up to one year, the G6 single-gas wearables save you money in multiple ways – from an extended lifespan, find-my-device technology for lost devices, and buying options that fit your needs. Through its connectivity, you can quickly locate people and devices to aid emergency situations, minimize the cost of lost devices and see current compliance status. Automatic over-the-air updates with the latest features and enhancements ensure that G6 always has the latest features during its entire lifespan and won't cause waste like static, disposable devices that require regular replacement.

Built-in capabilities offer more precise short-term exposure limit (STEL) monitoring to reduce false alarms and associated costs. G6 is our solution to keeping your workers connected and steps ahead of potential incidents without breaking the budget.

The flexibility to buy, lease, or rent gives added options for Operations Managers, Safety Managers, and contractors to acquire products as needed, depending on both short- or long-term project requirements. For turnarounds in particular, the ability to rent devices for only the days workers are onsite is a cost saving measure that can positively impact your bottom line.

05 Safety Beyond Compliance.

With Blackline's connected safety solutions, you can stay ahead of the curve while ensuring the safety and efficiency of your entire worksite. Blackline's data enables you to review gas exposure reports, analyze heat maps of hazardous incident locations and see compliance trends over time.

Unsure of the current bump test and calibration status of every device in the field for your entire operation? Blackline Live provides real-time visibility into the status of every connected device so you can take steps to ensure the safety of every worker.

With connected wearables and software that deliver data analytics for real-time compliance, you'll have complete confidence in the safety of your team.

Blackline^{safety} | Power BI
Pages Export Share

Alerts Report

Alerts location

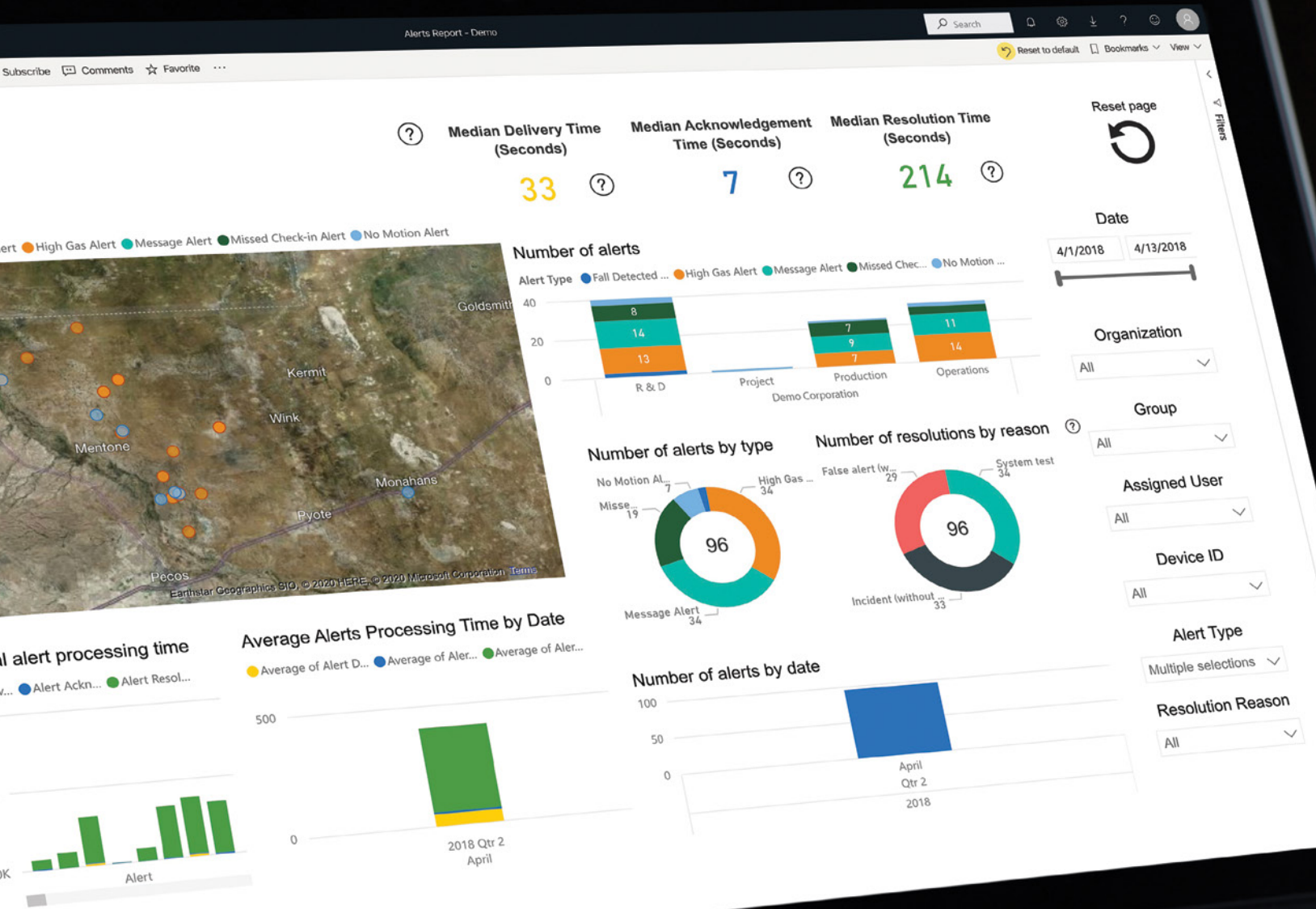
Alert Type ● Fall Detected Al



? Individuals

● Alert Deliv
+ 2K

Seconds
1K



06

Application

The Comprehensive Ecosystem That's There When You Need It.







07

Turnarounds and Shutdowns.

Periodically, oil and gas facilities need to take processes offline and suspend production for scheduled maintenance, repairs, cleaning or unexpected equipment failures. Whether it's a planned turnaround, shutdown or an unforeseen outage, there are many challenges these short-term operations face.

These include having visibility into workplace productivity and safety for not only regular employees but also contract workers that are less familiar with the facility and standard safety procedures. Blackline Vision can help you minimize lost revenue and avoid safety incidents.

blacklinevision

Blackline Vision takes the data already being collected from your connected devices and utilizes data science processes and algorithms to uncover opportunities to increase operational efficiency and productivity during a turnaround or shutdown. This can save hours or days of work which, in turn, gets production back online faster – potentially adding millions in revenue that otherwise would have been lost.



08

Evacuation and Incident Management.

During an evacuation, speed and visibility are vital to the safety of your team. With G7, you have complete awareness and mass notification ability to direct teams and individuals to the nearest muster point. Push-to-talk functionality provides constant communication between onsite workers, while Blackline Live provides real-time visibility of gas readings, team wellbeing and other information to gauge the emergency response.

Take advantage of real-time, relevant communications and post-evacuation assessment tools to find faster routes ensuring everyone finds safe ground. Plus, since you'll be able to see the location of each connected worker, you can eliminate time-consuming and inaccurate manual headcounts. If a worker doesn't reach a muster point, you'll know their precise location so personnel can initiate a rapid and informed response. These combined factors can save hundreds of thousands of dollars each year during drills and actual evacuations. You never want to experience evacuations, but when you do, you'll want Blackline by your side.





G6 Wearable Product Features At-A-Glance



Gas	Sensor type	Sensor model	Range	Resolution
Carbon monoxide (CO)	Electrochemical	Citytech, 4CF+ CtiCeL	0–500 ppm	1 ppm
Hydrogen sulfide (H ₂ S)	Electrochemical	City Technology, 4HS+ Hydrogen Sulfide CtiCeL	0–100 ppm	0.1 ppm
Oxygen (O ₂)	Electrochemical	City Technology, 4OxLL Longlife Oxygen CtiCeL	0–25% vol	0.1% vol
Sulfur dioxide (SO ₂)	Electrochemical	City Technology, 4S Rev. 2 Sulfur Dioxide CtiCeL	0–100 ppm	0.1 ppm

Standard features

Single-gas monitoring - CO, H₂S, O₂, or SO₂
 Direct-to-cloud connectivity
 Over-the-air configurations
 Automatic over-the-air updates
 Integrated GPS location technology
 Find My G6
 Up to 1-year battery life
 Rechargeable battery
 Automatic bump tests and calibrations through G6 Dock

Standard safety features

Device location, gas readings, bump and calibration data, and alarms automatically uploaded daily
 High gas notification
 Low gas notification
 Short-term exposure limit (STEL) notification
 Bump test and calibration notification
 Bump test and calibration failure notification

Size & weight

Size: 71mm x 110mm x 37mm (2.8" x 4.3" x 1.5")
 Weight: 146g (5.2 oz)

User interface

240 x 320 pixel graphical, high contrast, 6-bit color liquid crystal display
 Menu system and power-on driven by threebutton keypad
 Multi-language support: EN, FR, ES, DE, IT, NL, PT

User notification

Visual: Color display and multi-color lights on top and side
 Sensory: Vibrating
 Audible: ~95 dB @ 30 cm (11.8")

Power & battery

Rechargeable Li-ion battery: 1200 mAh
 Battery life: Up to 1 Year at 20°C (68°F) under normal usage
 Charge time: 4 hours

Approvals

SAR, RoHS, CE, RCM
 FCC ID: W77G62 IC: 8255A-G62
 Contains FCC ID: XPY1EIQ24NN, IC: 8595A-1EIQ24NN
 Canada & USA: Class I Division 1 Group A,B,C,D T4; Class I Zone 0 AEx ia IIC T4; Ex ia IIC T4 Ga
 IECEx: Ex ia IIC T4 Ga
 ATEX: Ex ia IIC T4 Ga
 UKCA: Ex ia IIC T4 Ga

Location technology

GPS Radio: 48-channel high sensitivity
 Assisted-GPS: Yes
 GPS Accuracy: ~5 m (16 ft) Outdoors
 Location update frequency: During high urgency events and once per day

Cellular Communication

LTE-M and NB-IoT

Environmental

Storage temperature: -30°C to 60°C (-22°F to 140°F)
 Operating temperature: -20°C to 55°C (-4°F to 131°F)
 Charging temperature: 0°C to 45°C (32°F to 113°F)
 Ingress Protection: Designed to meet IP67

Warranty

Four-year limited warranty

Blackline Live web application

Cloud-hosted safety monitoring web application is customizable for every customer requirement. Includes compliance dashboard, map, user roles, device configurations, notification setups, and essential reporting

All specifications subject to change without notice.

G7 Wearable Product Features At-A-Glance



Gas	Sensor type	Sensor model	Range	Resolution
Ammonia (NH ₃)	Electrochemical	Citytech, Sensoric NH ₃ 3E 100 SE	0–100 ppm	0.1 ppm
High-range ammonia (NH ₃)	Electrochemical	Sensoric NH ₃ E3 500 SE	0–500 ppm	1 ppm
Carbon monoxide (CO)	Electrochemical	Citytech, 4CF+ CiTiceL	0–500 ppm	1 ppm
High-range carbon monoxide (CO)	Electrochemical	Citytech 4CM	0–2000 ppm	5 ppm
Hydrogen resistant carbon monoxide (CO-H)	Electrochemical	Citytech 2CF3	0–500 ppm	1 ppm
Carbon dioxide (CO ₂)	NDIR	Gas Sensing Solutions, MiniR	0–50,000 ppm	50 ppm
Chlorine (Cl ₂)*	Electrochemical	Citytech, Sensoric Cl ₂ 3E 50	0–20 ppm	0.1 ppm
Chlorine dioxide (ClO ₂)*	Electrochemical	Sensoric ClO ₂ 3E 1 O	0–2 ppm	0.01 ppm
COSH	Electrochemical	Citytech, 4COSH Dual Gas CO/H ₂ S Sensor	0–500 ppm CO, 0–100 ppm H ₂ S	1 ppm CO, 0.1 ppm H ₂ S
Hydrogen cyanide (HCN)	Electrochemical	Sensoric HCN 3E 30 F	0–30 ppm	0.1 ppm
Hydrogen sulfide (H ₂ S)	Electrochemical	City Technology, 4HS+ Hydrogen Sulfide CiTiceL	0–100 ppm	0.1 ppm
High-range hydrogen sulfide (H ₂ S)	Electrochemical	City Technology, 4HS+ Hydrogen Sulfide CiTiceL	0–500 ppm	0.5 ppm
LEL-MPS™	Molecular property spectrometer™	Nevada Nano, LEL MPS™	0–100% LEL	0.1% LEL
LEL-infrared (LEL-IR)	NDIR	MIPEX, 02-X-X.X.1	0–100% LEL	1% LEL
Nitrogen dioxide (NO ₂)	Electrochemical	City Technology, 4ND	0–50 ppm	0.1 ppm
Oxygen (O ₂)	Pumped electrochemical	City Technology, 4OxLL Longlife Oxygen CiTiceL	0–25% vol	0.1% vol
Ozone (O ₃)*	Electrochemical	Sensoric O ₃ 3E 1	0–1 ppm	0.01 ppm
Photoionization (PID)	PID	Ion Science, MiniPID 2	0–4,000 ppm	Dynamic resolution**, 0.1 ppm
Sulfur dioxide (SO ₂)	Electrochemical	City Technology, 4S Rev. 2 Sulfur Dioxide CiTiceL	0–100 ppm	0.1 ppm

*Does not work with the pump module. **Dependant on correction factor.

Functional settings

Fall detection and No-motion detection:

Tri-axis accelerometer, tri-axis gyro, software processing, configurable sensitivity, configurable time for no-motion

SOS latch: Pull latch to trigger SOS alert

Silent SOS: Press and hold latch to trigger SOS alert

Low-battery: Configurable threshold

Worker check-in: Configurable timer (30 – 180 min, or off), automatic check-in when driving

Gas cartridge features

Under limit

Over limit

Time-weighted average (TWA)

Short-term exposure limit (STEL)

High gas alert

Low gas alert

Bump test and calibration notification

Bump test and calibration failure

Size & weight

G7 with Standard Cartridge

Size: 64 mm x 124 mm x 29 mm (2.52" x 4.88" x 1.06")

Weight: 162 g (5.7 oz)

G7 with Single-gas Cartridge

Size: 64 mm x 128 mm x 29 mm (2.52" x 5.04" x 1.06")

Weight: 167 g (5.9 oz)

G7 with Multi-gas diffusion Cartridge

Size: 66 mm x 150 mm x 29 mm (2.52" x 5.91" x 1.06")

Weight: 192 g (6.8 oz)

G7 with Multi-gas pump Cartridge

Size: 66 mm x 151 mm x 38.5 mm (2.6" x 5.95" x 1.52")

Weight: 238 g (8.4 oz)

Target flow rate: 300ml/min

Maximum hose length: 99ft (30.2 m)

Wireless updates

Device configuration changes: Yes

Device firmware upgrade over-the-air (FOTA): Yes

User interface

Display: 168 by 144 pixel graphical, high contrast, liquid crystal display with front lighting

Menu system: Driven by three-button keypad

Power button: On/off

SOS latch: Send emergency alert

Multi-language support: EN, FR, ES, DE, IT, NL, PT

User notification

Green SureSafe® light: Blinking (powered), continuous (connected)

Yellow top and front lights: Yellow pending alarm and yellow warning alarm

Red top and front lights: Red alert communicated

Blue LiveResponse™ top and front lights:

Confirmation that a monitoring team has acknowledged the alert

Alarm Indicators: Speaker, LED lights and vibration motor

Speaker sound pressure level: ~95 dB @ 30 cm (~95 dB @ 11.8")

Voice calling: Speakerphone and phone modes (G7c model only)

G7c wireless radio

Wireless coverage: 100 countries, 200 wireless carriers

North America: 3G/4G radio, 3G UMTS bands 2 and 5; 4G bands 2, 4 and 5

International: 2G/4G radio, 2G G ESM bands E-GSM and PCS; 4G bands 3, 7 and 20

Antenna: Internal regionally optimized

G7x wireless radio

Works with G7 Bridge satellite base station

Radio: 902.0 – 928.0 MHz, 1 Watt

AS/NZ Radio: 915.0-928.0 MHz

Antenna: Internal

Radio link range: 2 km (1.25 mi)

Location technology

GPS Radio: 48-channel high sensitivity

Assisted-GPS: Yes (G7c model only)

GPS Accuracy: ~5 m (16 ft) outdoors

Indoor location technology: Blackline Safety location beacons

Location update frequency: G7c 5 min, G7x 15 min defaults

Power & battery

Rechargeable Li-ion battery: 1100 mAh Li-ion

Battery Life: 18 hours at 20°C (68°F) under normal usage

Charge time: 4 hours

Environmental

Storage temperature: -30°C to 60°C (-22°F to 140°F)

Operating temperature: -20°C to 55°C (-4°F to 131°F)

Charging temperature: 0°C to 45°C (32°F to 113°F)

Ingress Protection: Designed to meet IP67

Approvals

G7c: SAR, RoHS, CE, RCM

Unit ID 3570xxxxxx

FCC ID: W77G7C2 IC: 8255A-G7C2

Contains FCC ID: XPY1EIQ24NN IC: 8595A-1EIQ24NN

G7 TECHNICAL USER MANUAL || 57

or

Unit ID 3567xxxxxx

FCC ID: W77G7C IC: 8255A-G7C

Contains FCC ID: XPY1CGM5NNN, IC: 8595A-1CGM5NNN

or

Unit ID 3566xxxxxx

Contains FCC ID: XPY1CGM5NNN, IC: 8595A-1CGM5NNN

Canada & USA: Class I Division 1

Group A,B,C,D T4;

Class I Zone 0 AEx da ia IIC T4; Ex da

ia IIC T4 Ga

IECEx: Ex da ia IIC T4 Ga

ATEX: Ex da ia IIC T4 Ga

LEL: CSA C22.2 No.152; ISA 12.13.01

LEL Pump Cartridge: CSA C22.2

No.152; 0°C ≤ Ta ≤ 40°C;

ANSI/ISA-12.13.01; -10°C ≤ Ta ≤ 40°C

G7x: SAR, RoHS, RCM

FCC ID: W77G7X IC ID: 8255A-G7X

Canada & USA: Class I Division 1

Group A,B,C,D T4;

Class I Zone 0 AEx da ia IIC T4; Ex da

ia IIC T4 Ga

IECEx: Ex ib IIC T4 Gb

LEL: CSA C22.2 No.152; ISA 12.13.01

LEL Pump Cartridge: CSA C22.2

No.152; 0°C ≤ Ta ≤ 40°C;

ANSI/ISA-12.13.01; -10°C ≤ Ta ≤ 40°C

Warranty

G7: two years limited warranty

Cartridges: lifetime with service plan

Blackline Complete: three year

operating lease with three year

warranty

All specifications subject to change without notice.

G7 EXO Area Gas Monitor

Product Features At-A-Glance



Gas	Sensor type	Sensor model	Range	Resolution
Ammonia (NH ₃)	Electrochemical	Citytech, Sensoric NH3 3E 100 SE	0–100 ppm	0.1 ppm
High-range ammonia (NH ₃)	Electrochemical	Sensoric NH3 E3 500 SE	0–500 ppm	1 ppm
Carbon monoxide (CO)	Electrochemical	Citytech, 4CF+ CiTiceL	0–500 ppm	1 ppm
High-range carbon monoxide (CO)	Electrochemical	Citytech 4CM	0–2000 ppm	5 ppm
Hydrogen resistant carbon monoxide (CO-H)	Electrochemical	Citytech 2CF3	0–500 ppm	1 ppm
Carbon dioxide (CO ₂)*	NDIR	Gas Sensing Solutions, MiniIR	0–50,000 ppm	50 ppm
Chlorine (Cl ₂)*	Electrochemical	Citytech, Sensoric Cl2 3E 50	0–20 ppm	0.1 ppm
Chlorine dioxide (ClO ₂)	Electrochemical	Sensoric ClO2 3E 1 O	0–2 ppm	0.01 ppm
COSH	Electrochemical	Citytech, 4COSH Dual Gas CO/H ₂ S Sensor	0–500 ppm CO, 0–100 ppm H ₂ S	1 ppm CO, 0.1 ppm H ₂ S
Hydrogen cyanide (HCN)	Electrochemical	Sensoric HCN 3E 30 F	0–30 ppm	0.1 ppm
Hydrogen sulfide (H ₂ S)	Electrochemical	City Technology, 4HS+ Hydrogen Sulfide CiTiceL	0–100 ppm	0.1 ppm
High-range hydrogen sulfide (H ₂ S)	Electrochemical	City Technology, 4HS+ Hydrogen Sulfide CiTiceL	0–500 ppm	0.5 ppm
LEL-infrared (LEL-IR)	NDIR	MIPEX, O2-X-X-X.1	0–100% LEL	1% LEL
LEL-MPS™	Molecular property spectrometer™	Nevada Nano, LEL MPS™	0–100% LEL	0.1% LEL
Nitrogen dioxide (NO ₂)	Electrochemical	City Technology, 4ND	0–50 ppm	0.1 ppm
Oxygen (O ₂)	Pumped electrochemical	City Technology, 4OxLL Longlife Oxygen CiTiceL	0–25% vol	0.1% vol
Ozone (O ₃)*	Electrochemical	Sensoric O3 3E 1	0–1 ppm	0.01 ppm
Photoionization (PID)	PID	Ion Science, MiniPID 2	0–4,000 ppm	Dynamic resolution**, 0.1 ppm
Sulfur dioxide (SO ₂)	Electrochemical	City Technology, 4S Rev. 2 Sulfur Dioxide CiTiceL	0–100 ppm	0.1 ppm

*Does not work with the pump module.

**Dependant on correction factor.

Functional settings

SOS latch: Pull latch to trigger SOS alert
Low-battery: Configurable threshold
Connection lost: Configurable threshold
Two-way messages: Custom messages and 10 preconfigured sent to monitoring personnel
Maintenance code: Configurable 4 digit
Push-to-talk: Send and receive voice messages to other G7 devices

Gas cartridge features

High gas alert
Low gas warning alarm
Under limit (UL)
Over limit alerts (OL)
Bump test and calibration notification
Bump test and calibration failure

Size & weight

Material: Rugged housing built from aluminum, plastic and rubberized bumpers
Size: 385 mm x 188 mm x 220 mm (15.1" x 7.4" x 8.7")
Weight: 12.25Kg 27 lbs

Wireless updates

Device configuration changes: Yes
Device firmware upgrade OTA: Yes

Interface ports

Intrinsically safe, configurable external signal ports designed to integrate with external alarms and electrical systems.

User interface

Display: : 4.4" diagonal, 480 by 640 pixel, eight-colour active matrix liquid crystal display
Menu system: driven by three-button keypad
Power button: On/off
SOS latch: Send SOS alert
Multi-language support: EN, FR, ES, DE, IT, NL, PT

User notification

Green connectivity light: Blinking (powered), continuous (connected)
360-degree visible yellow and red lights
Yellow light: Warning alarms
Red light: Alerts
Blue LiveResponse™ indicator light: Confirmation that a monitoring team has acknowledged an alert

Cellular wireless radio

Wireless coverage: 100 countries, 200 wireless carriers
North America: 3G/4G radio; 3G UMTS bands 2 and 5; 4G bands 2, 4 and 5
International: 2G/4G radio; 2G GSM bands E-GSM and PCS; 4G bands 3, 7 and 20
Asia Pacific: 3G/4G radio; 3G UMTS band 1; 4G bands 3, 8 and 28
Antenna: Internal

Satellite module

User-upgradeable satellite module allows EXO to connect to the Iridium satellite network for remote areas outside of cellular connectivity
Optional module: Yes
Network: Iridium, global coverage
Radio: 1621 MHz, 2 Watts
Antenna: Internal

Four-channel pump module

Optional module: Yes
Number of pump channels: 4
Sampling period per channel: Adjustable
Tubing length per channel: Up to 30 m (100 ft)
Size: 18x9.5x8 cm (7x3.7x3.1 in)
Weight: 272 g (0.6 lb)

IS trickle charge port

Can be used to hard-wire an IS power supply to run EXO indefinitely

Environmental

Storage temp.: -40°C to 60°C (-40°F to 140°F)
Operating temp.: -20°C to 50°C (-4°F to 122°F)
Ingress protection: Designed to meet IP65
Location technology
Multi-constellation: GPS/QZSS, Galileo, Beidou
Receiver type: 72-channel
Assisted-GNSS: Yes
GNSS Accuracy: 5m (16feet), CEP 50%, 24 hours static

Power & battery

Rechargeable battery capacity: 144 Ah (LiFePO₄)
Battery life in diffusion mode: 100 days at 20°C (68°F), LEL-IR, H₂S, CO and O₂ configuration
Battery life in pump mode: 30 days at 20°C (68°F)
Charge time: ~12 hrs
Charge temp.: 0°C to 45°C (32°F to 113°F)

A/B interface ports

Intrinsically safe, highly configurable external signal ports designed to integrate with external alarms and electrical systems.

Four pins per interface port

Pin 1: Low side switch
Voc=24Vdc, Isc=3.33A, Co=0F, Lo=0H
Pin 2: Ground
Pin 3: High voltage out
Voc=18Vdc, Isc=268mA, Co=0.194uF, Lo=495uH
Pin 4: Low voltage out
Voc=3.2Vdc, Isc=32mA, Co=100uF, Lo=23.9uH

Approvals

RoHS, CE, RCM
Canada & USA: Class I Division 1 Group A,B,C,D T3;
Class I Zone 0 AEx ia IIC T3; Ex ia IIC T3 Ga
IECEX: Ex ia IIC T3 Ga
ATEX: Ex ia IIC T3 Ga
LEL: CSA C22.2 No.152; ISA 12.13.01
FCC ID: W77EXO IC: 8255A-EXO
Contains: FCC ID: XPY1EIQ24NN, Q639603N
IC: 8585A-1EIQ24NN, 4629A-9603N

Warranty

Three-year hardware warranty
Extended warranty available

All specifications subject to change without notice.



FOR MORE INFORMATION, VISIT:

blacklinesafety.com/oil-gas

NORTH AMERICA | Toll-free: +1 800 486 8889 | sales@blacklinesafety.com
UK & REST OF EUROPE | Phone: +44 1787 222684 | eusales@blacklinesafety.com
INTERNATIONAL | Phone: +1 403 451 0327 | sales@blacklinesafety.com

blacklinesafety

» blacklinesafety.com